

XB2 Banner Display Assembly Instructions

1



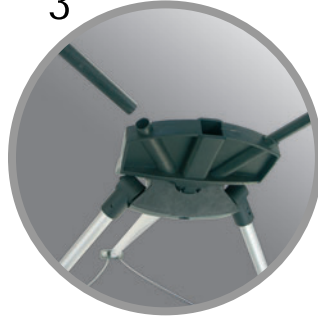
Remove your stand and support arms from the carry bag.

2



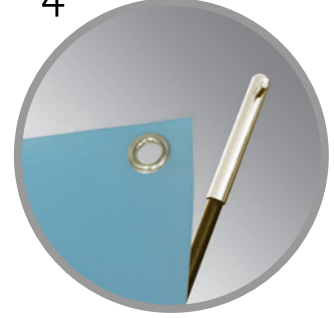
Fully open stand.

3



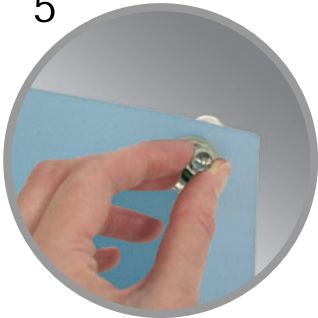
Insert arms into top of stand.

4



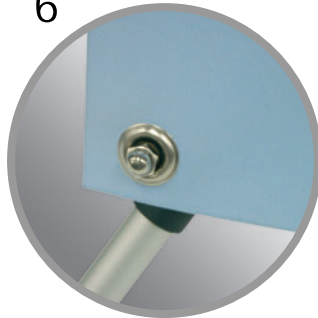
Unscrew the four dome headed nuts and hook graphic over threaded fixing.

5



Screw back all the dome headed nuts onto the fixing...

6



... to secure graphic.

