



---

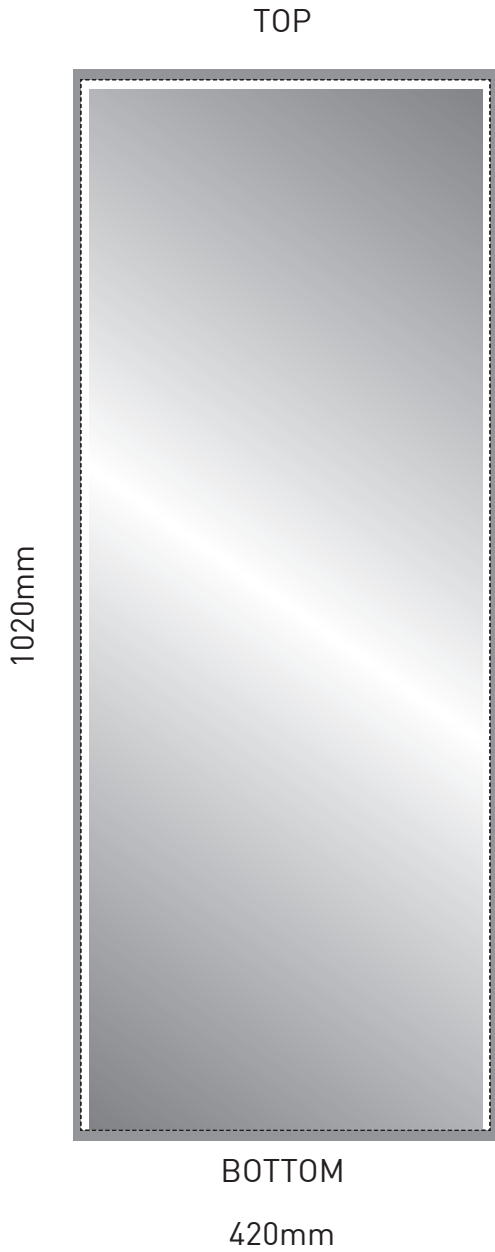
#### **AV22" Screen Stand - Audio Visual Display**

- Contemporary design for mounting a flat screen up to 22" wide and portrait graphic panel
- Elegant high quality stand with screen tilt facility, finished in Olympic satin silver
- Simple robust assembly incorporating wheel braked swivel castors as standard
- Complete cable management can be achieved within central column
- Optional equipment tray for discreet mounting under base
- Quality assured - 5 year guarantee
- Footprint 657mm x 424mm
- Approximate overall height 1500mm (inc. screen)
- Nett weight 18Kg (ex. screen and tray)

**AV22** Graphic Specification

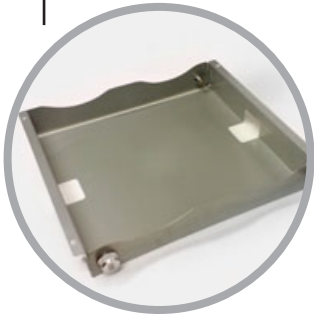
1020mm x 420mm

- Visible graphic area  
1010mmH x 400mmW
- Finished print size  
1020mmH x 420mmW
- Image bleed area  
1040mmH x 440mmW



## AV22", AV32" and AV42" ScreenStand Assembly Instructions

1



Start your assembly at stage 5 if the AV tray option was not required.

2



Place the ScreenStand base upside down.

3



Position the AV Tray onto the base lining up the fixing holes.

4



Using the 4 screws and washers provided, securely fasten the AV Tray to the ScreenStand base.

5



Pull off both side trim mouldings.

6



Loosen clamp bracket at bottom of column assembly.

7



Position column centrally within central channel and fully tighten both clamp bracket screws.

8



Slide each curved profile into opposite ends of the central channel ensuring uprights arc away from column.

9



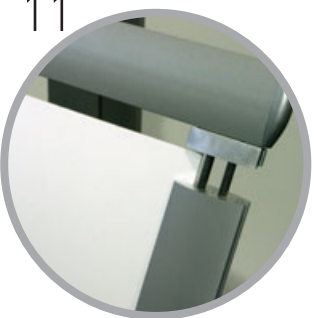
Use the top rail profile to determine the correct distance between the two curved uprights.

10



Ensure uprights are positioned centrally and tighten pre-located screws (two per upright). Replace both side trim mouldings.

11



Slot your graphic in between the uprights, and cap off with the push-fit top rail.

12



Bolt your monitor to the Vesa mount (AV22") or universal mount bracket (AV32" and AV42"). See the instructions supplied with your monitor.

**AV** ScreenStand Tray Assembly Instructions

1



Place the ScreenStand base upside down.

2



Position the AV Tray onto the base lining up the fixing holes.

3



Using the 4 screws and washers provided, securely fasten the AV Tray to the ScreenStand base.

